

TRAIN ENGINE

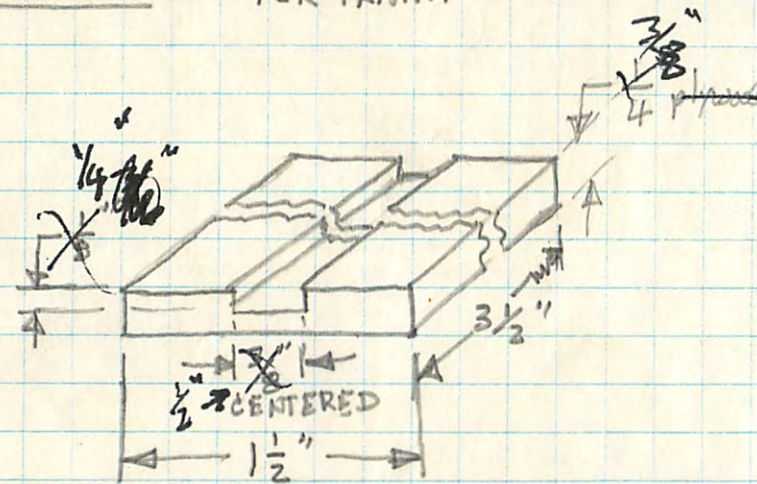
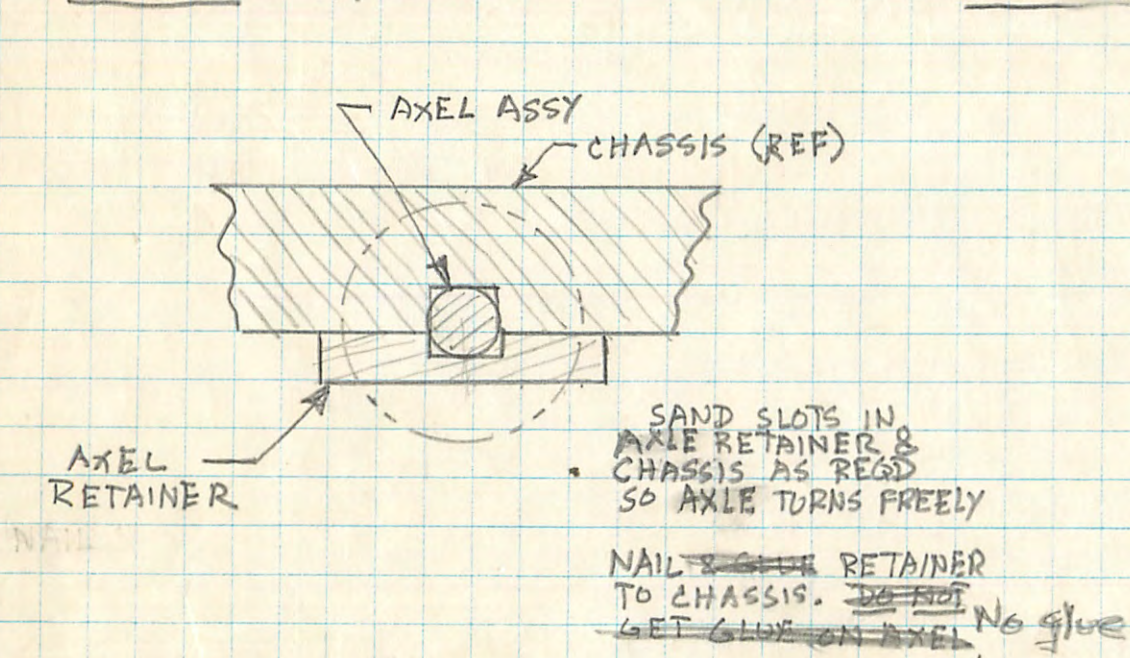
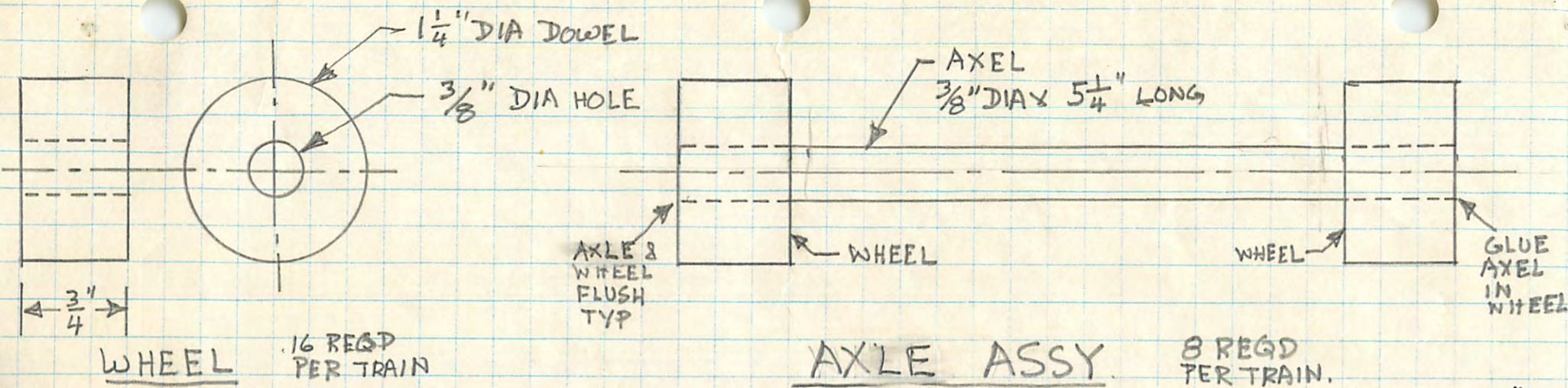
FULL SCALE

1 REQ'D  
PER TRAIN.





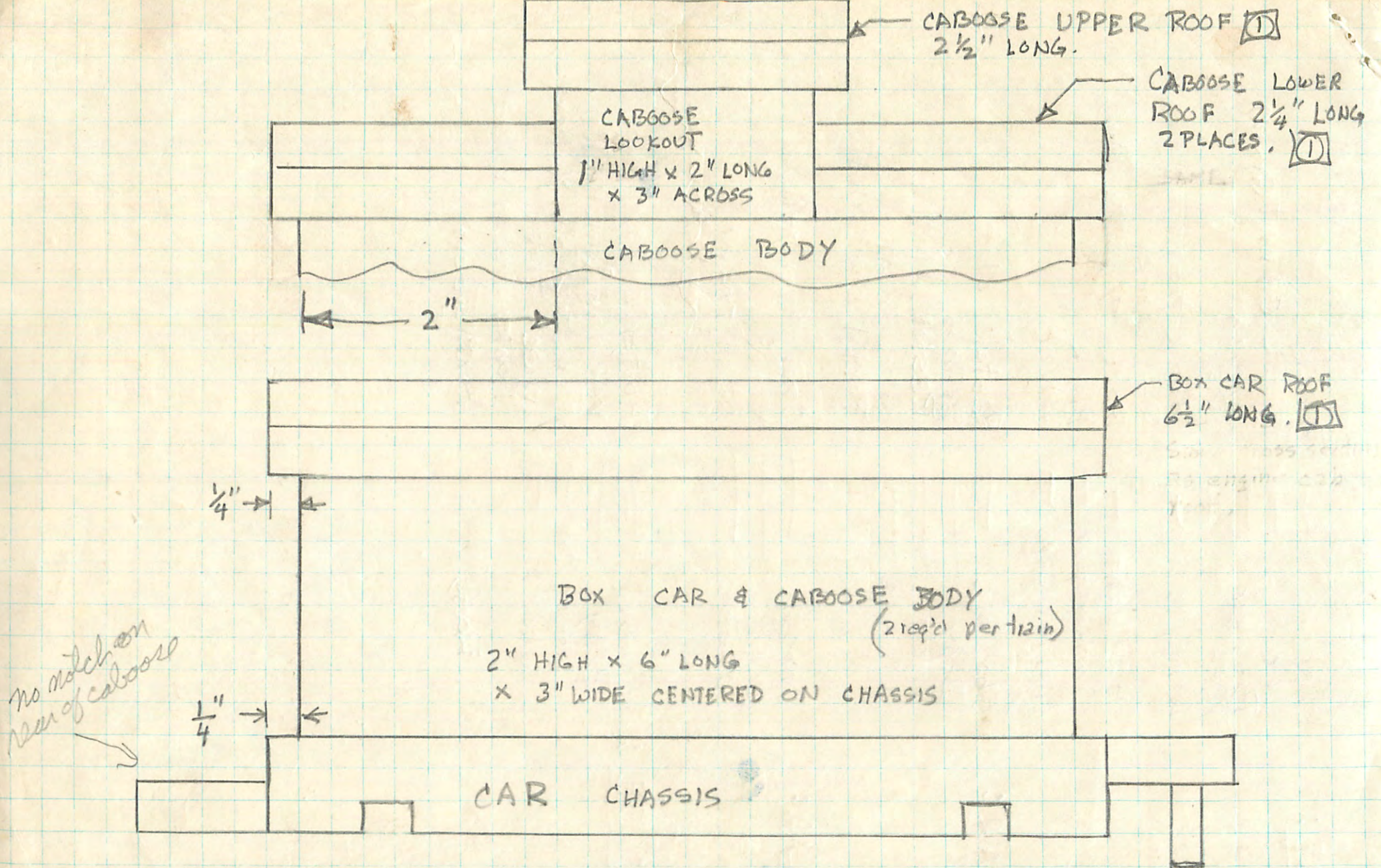




AXLE INSTALLATION. 8 PLACES PER TRAIN  
Paraffin on axles.

WHEEL/AXEL DETAILS & ASSY





① SAME CROSS SECTION AS  
ENGINE CAB ROOF

CAR ASSY.

(OVER FOR PAINT SCHEME)

FOR LOGGING CAR, WIRE  
TOGETHER THREE  $1\frac{1}{4}"$  DIA  
 $\times$   $6"$  LONG DOWELS &  
ATTACH CENTERED ON CHASSIS.



## ENGINE:

Chassis	—	Black
Cab	—	Black Cat mint Green
Boiler	—	Brown
Roof	—	Red
Wheels	—	Black tread Red wheel
Headlight	—	Black w/ white lens
Smokestack	—	Black
Boiler caps	—	Black

## BOXCAR:

Chassis	—	Pastel blue
Body	—	Brown
Roof	—	Pastel blue
Wheels	—	Black Tread Pastel blue wheel

## FLAT CAR:

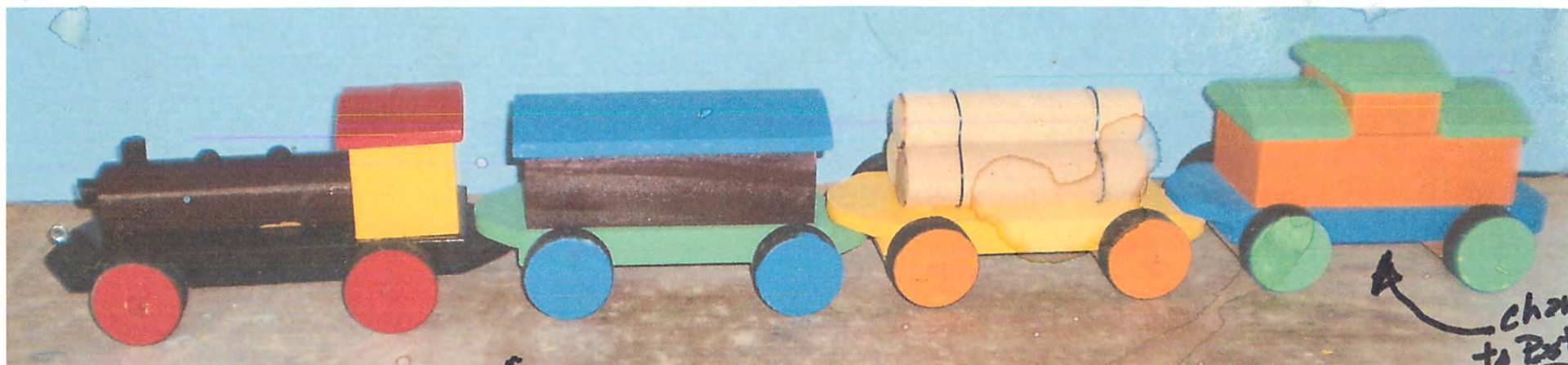
Chassis	—	Orange or yellow
Logs	—	Natural
Wheels	—	Black tread Orange or yellow

## CABOOSE:

Chassis	—	Hunter green
Body	—	Yellow
Lookout cab	—	Yellow
Wheels	—	Black tread Hunter green wheel
Roofs		Hunter green



# TOY TRAIN 2013



## ENGINE

Roof — Red  
 Cab — Yellow  
 Boiler — Brown  
 Chassis — Black  
 Wheels — Red  
 & BLACK

## BOX CAR

Roof - Royal Blue  
 Body - Brown  
 Chassis - Lt. Green  
 Wheels - Royal Blue

## FLAT CAR

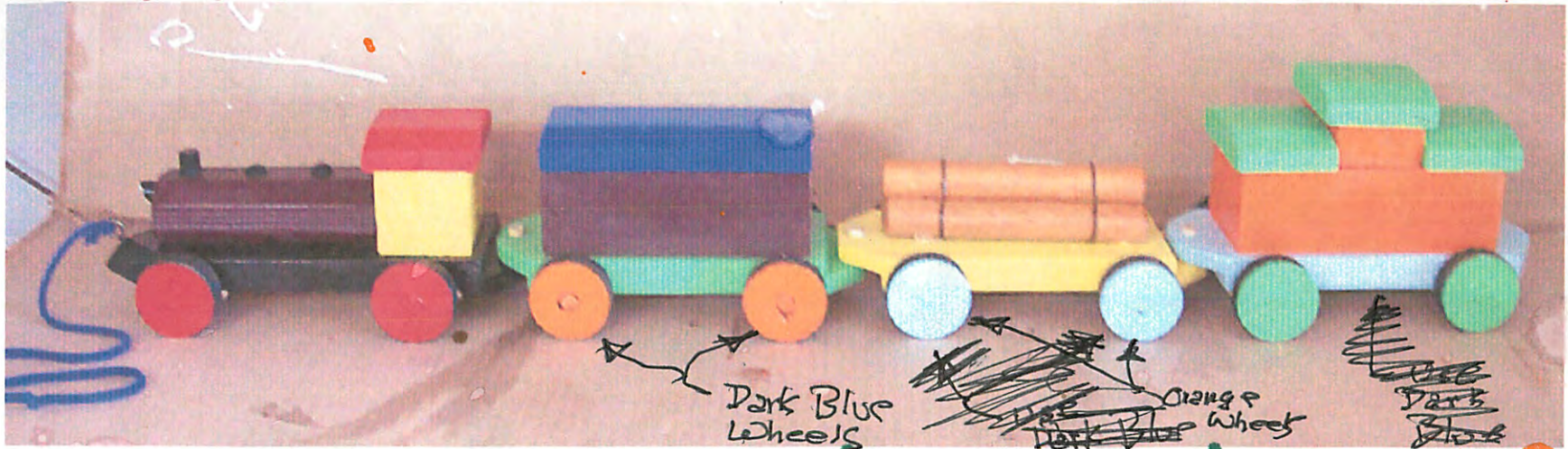
Load - Varnish  
 Chassis - Yellow  
 Wheels - Orange

## CABOOSE

Roof — Lt. Green  
 Body — Orange  
 Chassis - Pastel Blue  
 Wheels - Lt. Green



# TOY TRAIN COLOR SCHEME



## ENGINE

Wheels - red & black

Chassis - black

Roof - red

Boiler - brown

Cab - yellow

Smokestack - black

Boiler lids - black

Headlight - black & white

## BOX CAR

Wheels - orange & black

Chassis - ~~mint green~~ Clover Mist

Roof - brilliant blue

Body - Brown

## LOGGING CAR

Wheels - ~~Dark blue~~ & black

Chassis - yellow

Logs - Natural (Varnish)

## CABOOSE

Wheels - ~~Mint green~~ Clover Mist & black

Chassis - Pastel blue

Roof - ~~mint green~~ Clover Mist

Body - Orange



# TOY TRAIN COLOR SCHEME



## ENGINE

Wheels - red & black

Chassis - black

Roof - red

Boiler - redwood  
or brown

Cab - ~~forest green~~ <sup>pineapple yellow</sup>

Smokestack - black

Boiler Lids - black

Headlight - black & white

## BOX CAR

Wheels - ~~royal blue~~ <sup>orange</sup> & black

Chassis - ~~forest green~~ <sup>mint</sup>

Roof - ~~royal blue~~ <sup>brilliant</sup>

Body - brown primer  
or boxcar red

## LOGGING CAR

Wheels - pastel blue  
& black

Chassis - ~~pineapple yellow~~

Logs - redwood  
or brown

Spray Varnish  
Polyurethane

## CABOOSE

Wheels - ~~mint green~~ <sup>catnip</sup> & black

Chassis - pastel  
blue

Roof - catnip  
green

Body - orange





Hitch  
Hole  
Template

