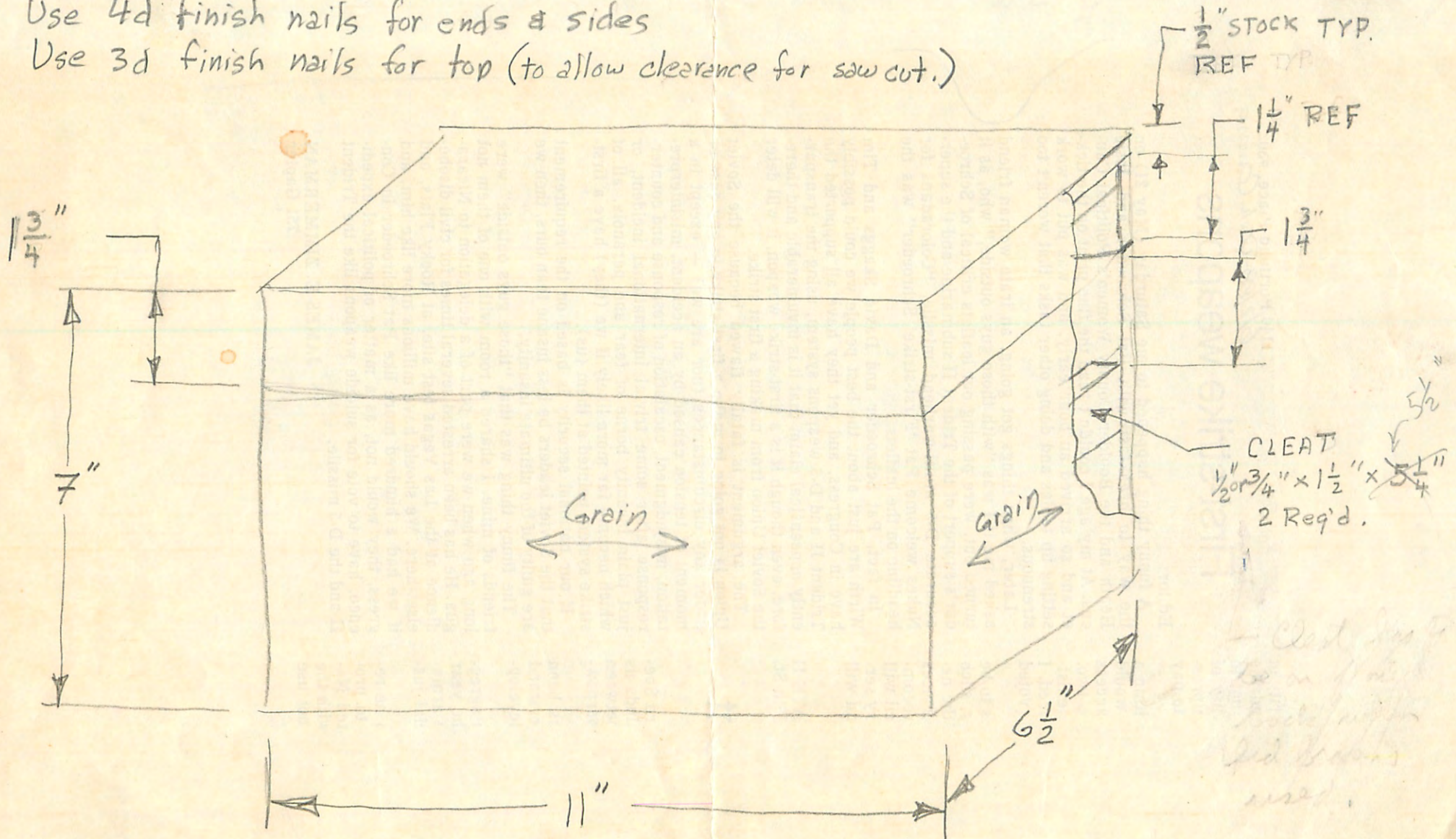
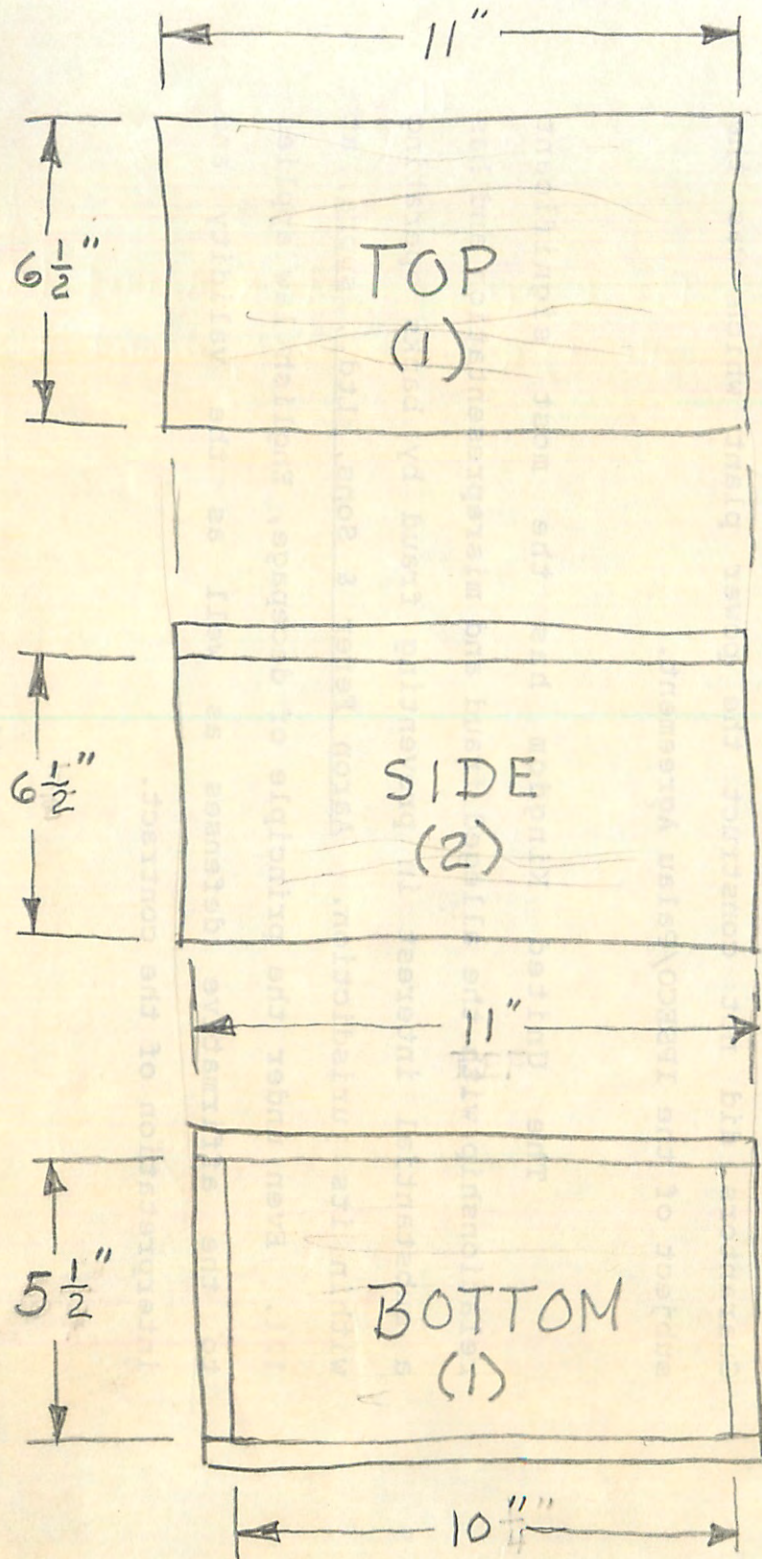


VANITY CASE

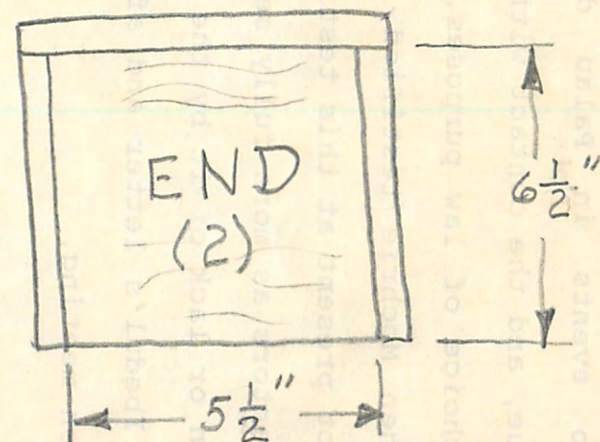
Use 4d finish nails for ends & sides

Use 3d finish nails for top (to allow clearance for saw cut.)

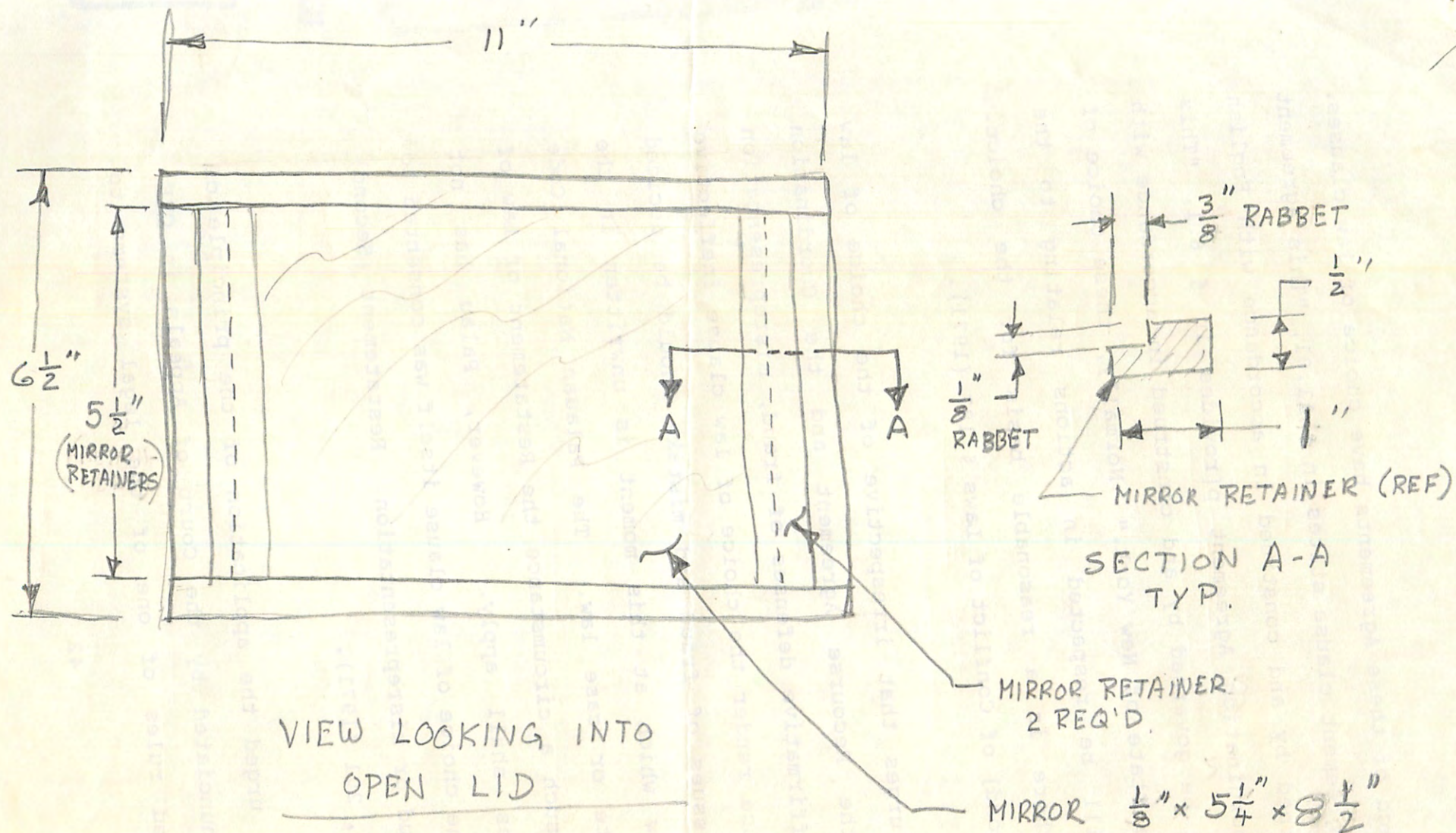




$\frac{1}{2}$ " STOCK TYP

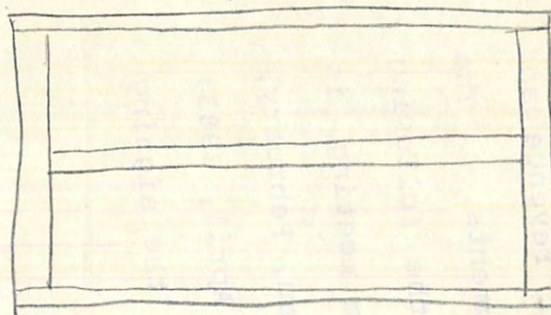


CASE

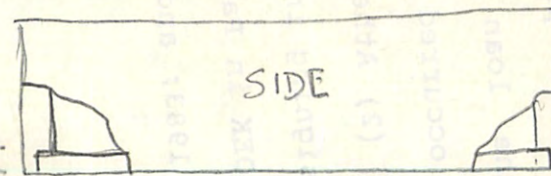
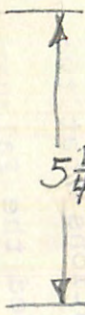


MIRROR INSTALLATION

$9\frac{3}{4}"$
(SIDES)



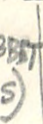
$5\frac{1}{4}"$ OVERALL
REF



SIDE

$2\frac{1}{4}"$ (SIDES & ENDS)

$\frac{1}{4}"$ RABBIT
(SIDES & ENDS)

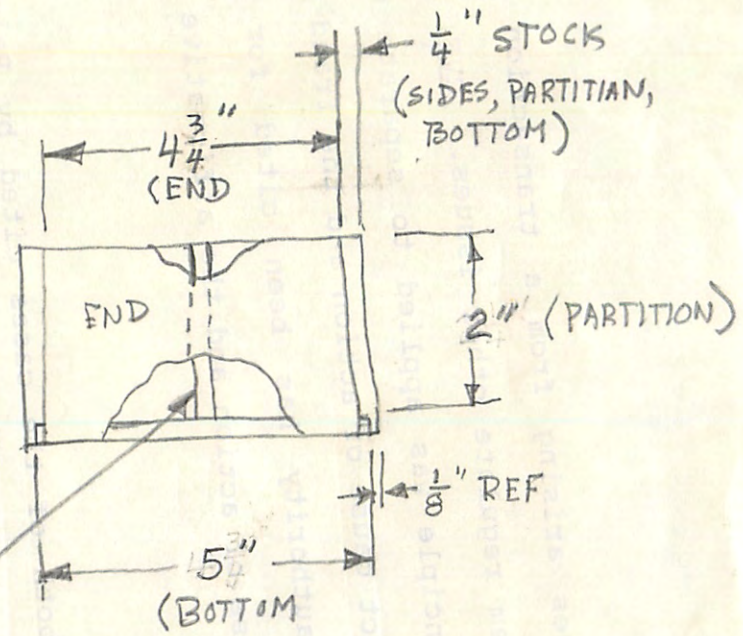
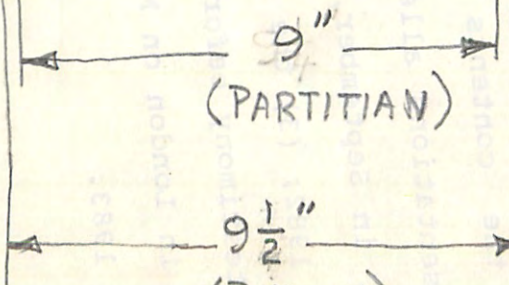


$\frac{1}{8}"$ RABBIT (REMAINING ON
SIDES & ENDS)

$\frac{3}{8}"$ STOCK
(ENDS)

9"
(PARTITION)

$9\frac{1}{2}"$
(BOTTOM)



$\frac{1}{4}"$ STOCK
(SIDES, PARTITION,
BOTTOM)

$4\frac{3}{4}"$
(END)

END

2" (PARTITION)

$\frac{1}{8}"$ REF

5"
(BOTTOM)

PARTITION CENTERED

TRAY

