

*Photo Album*

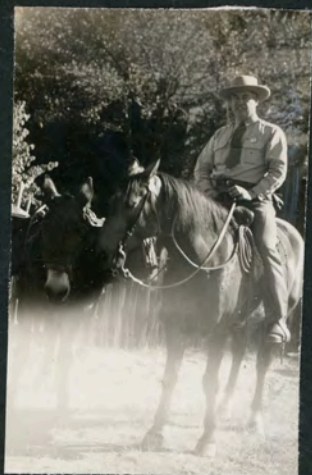




Red Peaves

Trusting Album.





Big Sur 1942



Red-Buck and Kate 1942  
Big Sur Station



Ken Mattall 1942



Red & Chuck Big Sur '42



Charlie Swartz & Bill Kinkell '42



Bob and Rip  
King City  
1942

To Mother and Dad  
from your  
loving son,  
Bob.



Red & Bob putting up signs  
at Big Sur 1942.



Big  
Saw  
Closer -  
grasses  
Guard  
Station  
as we  
found  
it in  
1942



June 42



Blacksmith Reaves  
Big Saw.



Rips in manger  
Big Saw.

Ted  
Big Saw  
1942



Bob & Chuck  
Big Saw.  
1942



Ted shaving Buck  
Big Saw.



E.T.R. Big Saw.





Pinyon 8-21-43

Pinyon Lookout Aug '43

Some of  
Santa Lucia  
Lookouts.  
Los Padres  
Forest



Carmel Mt AWS Station Oct '43

Carmel Mt. F.W.S. Station 10/43



Pinyon Lookout 8/43



Cone PK. 7-31-43

Cone Peak Lookout 7/43



Cone PK 7-31-43

Cone  
Peak  
lookout  
7/43



Three Peaks Lookout Aug - 1946



Skip  
&  
Ted

Bob  
&  
Irene  
on  
Cotwaix.



Three Peaks Lookout 8/46



Anderson Peak H.W.S. Station



Pinyon Pk. Lookout  
8/43

8/43  
Chews Ridge Lookout







Fire Camp - Aug. 1942



Fire Camp Aug. 1942



Valley Fog taken from Lookout  
1943



Valley Mist  
Taken from Lookout 1943





Ted  
building  
chain  
for  
station



Carmel Mt. Jess Snow - Ted 9/42



Charlie  
sitting  
in  
Ted's  
Chain



Jess Snow - Ted  
Carmel Mt 9/42

Jess Snow - Charlie  
Carmel Mt AWS station 9/42





Ted on  
dear ole  
Kate  
Palo  
Colorado  
1942

Palo Colorado Ted with Buck & Mules  
on way to Carmel Mt. Wolf & Kate



Carmel Mt A.W.S. Station 11/42



Ted @ Palo Colorado getting ready to service  
Carmel Mt. 11/42





Snowing on Camel Mt. Nov. 1942.



Camel Mt. Snow 1942



Chew's Ridge Lookout 8/43



Jess Snow - Camel Mt 11/42





King City Bunkhouse Aug. '43



Bob at Pinyon Pk. Lookout  
Aug. 1943



Bob on theodolite Pinyon Peak Lookout  
Aug - 1943



Bob Aldridge Big Sur July 2 - 1943





Hanson Flats 8-18-43

Hanson Flats - 8-18-43

Bob



Hanson Flats 8-43

Hanson Flats 8-'43



Hanson Flats 8-43



Big Sur 13 Dec

Forest Service Stock and Buck.  
Big Sur Dec. 43



King City Ranger Station 1st. K.C. 43

King City Ranger Station '43

Hanson  
Flats  
Aug. '43





View from Anderson Pk.  
'43



1942

Anderson Pk. Temp Station  
'43



1942

Sierran Golden Ross and beautiful  
view from Anderson Pk. '43



Construction  
of new  
A.W.S. Station  
Anderson Pk  
1943.



Harry Dick  
Ross  
@  
Anderson Pk.  
'43



Mac. & Margnet Mac Collum &  
the Ross' Anderson Pk '43



1942

Harry Dick @ Anderson Pk. '43







1942

Shenagolden & Kate  
Ted & Buck  
And. Pk. '43



Mc Chessney  
&  
Mrs. Ross  
And. Pk.  
1943



Harry Dick  
overlooking  
Sea or Fog  
And. Pk. '43



'43  
Mararet  
MacCollom  
& Shenagolden



Lillian Boss Ross & Mc Chessney  
Anderson Pk. '43



Lillian Boss Ross  
Anderson Pk. '43





Salinas Valley from Anderson Pk. '43



Road Washout  
below  
Marble  
Peak  
'43



Anderson FWS  
from Marble  
Peak area.



Sea of  
Poq  
Pacifi. look out  
'43  
Anderson Pk.



Marble Peak

View from  
Anderson Pk.  
'43



Big Sun Valley & F.S. Station taken from Trail '43





Ventana Pk. (The Window) Dec. 1942



Marble Peak - '43

Falls near  
Cold Spring  
on way to  
Anderson Pk.  
'43



"Kate"



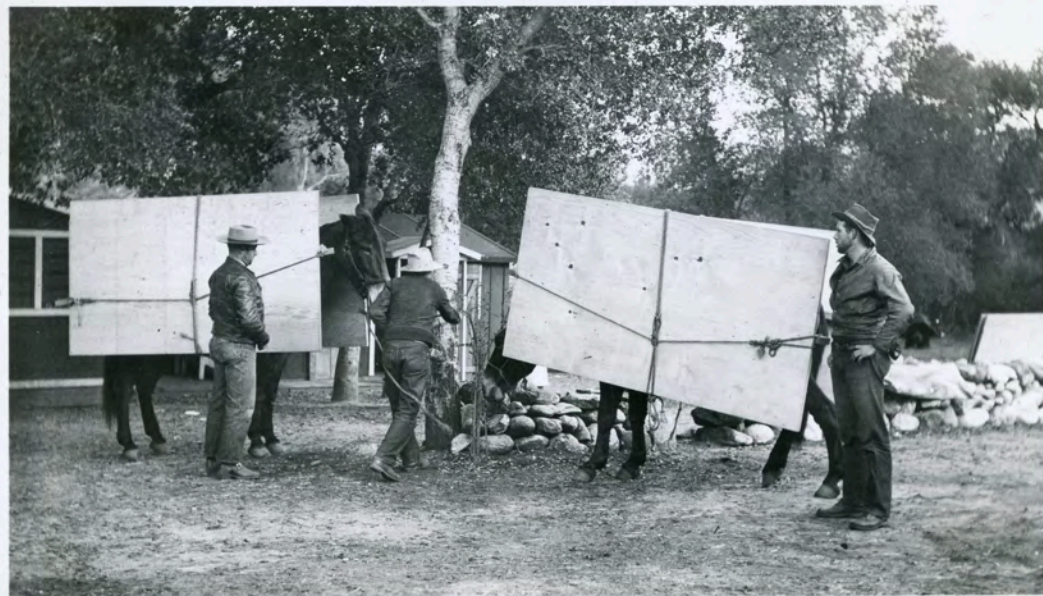
Pico Blanco from top of ridge.



Deer on truck trail to Anderson Pk.

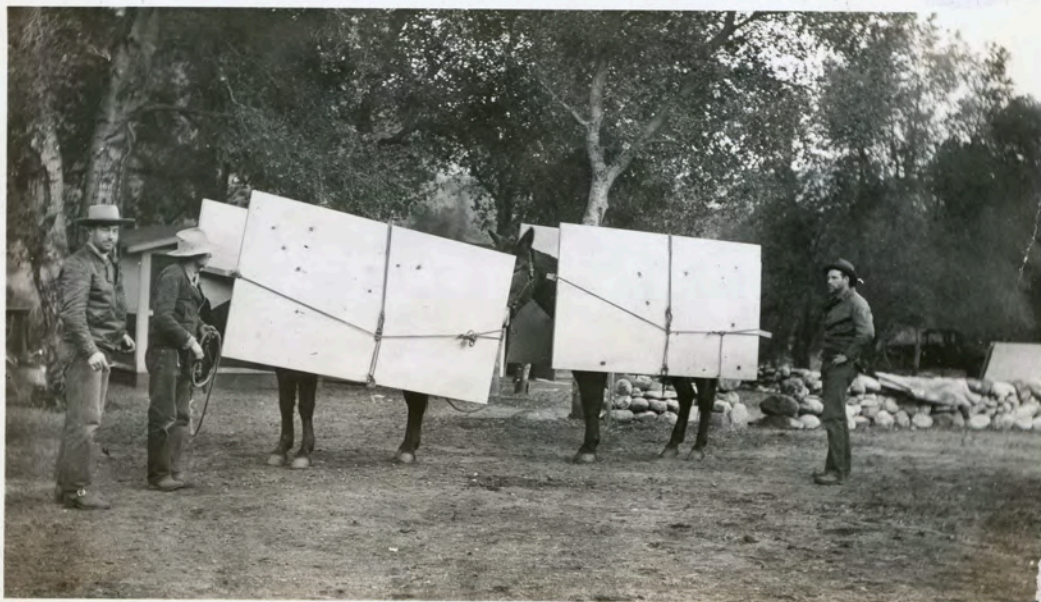


Taking Materials To Ventana Peak  
to build A.W.S (Aeroplane Watching Service) Station



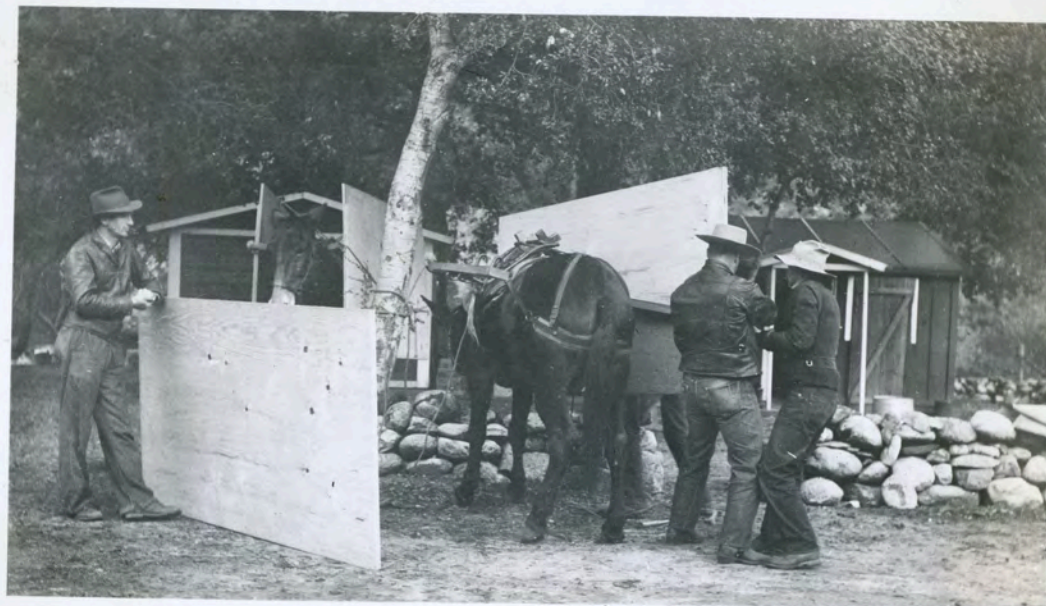
Ted Sherm Mansfield Tommy  
Barnes Camp Cachava - 12-'42

Almost Packed Ted - Sherm - Tommy 12-'42



Sherm & Ted  
Sherm & Ted Cachava Camp  
Carmel Valley 12-'42

Packing for Ventana Pk.



Barnes Camp Cachava 12-'42

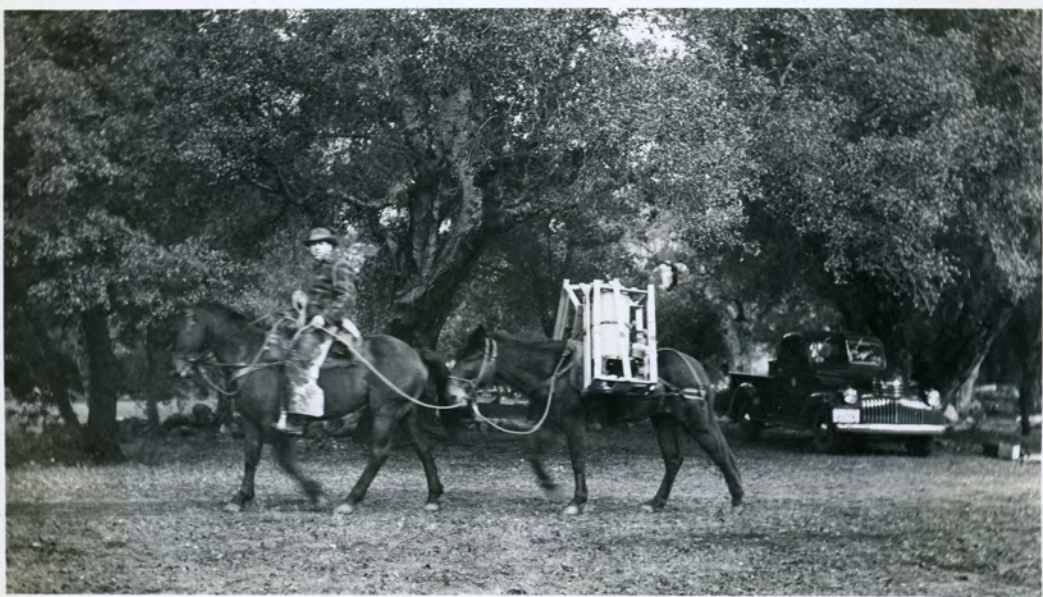




Bonnes Camp Packing for Ventana Pk.



Ready to leave!



Let's Go!



On the way To Ventana Pk from Bonnes Camp





Tommy Dec. 1942

View of Mountains on way to Ventana Dec. '42



Ventana Wilderness



Ventana - Construction of



Tommy Dec. '42





IRR  
←

Beautiful Spot  
on Big Sun River  
Oct. 12, 1943

One of  
Big Sun River  
Gorges  
10-43



Rugged Rocks Big Sun River 10-43



Big Sun  
River  
10-12-43





Rocks & more rocks along Big Sun River 10-43



Big Sun River 10-12-43



Big Sun River 10-12-43

Ventana from Ventana Trail - leading to Pine Ridge Trail.







Mt.  
Manuel  
Trail in  
distance  
Taken  
from  
Pine Ridge  
Trail

Big Sur  
10-43



Fisherman's  
Paradise



Big Sur  
Gorge  
Black & White  
Rocks  
10-43



Mountain Sunset.



Cone Peak Trail

8-47



On trail to Cone Peak 8-47



Cone Peak Aug-47



Ted  
Cone PK.  
8-47



Cone PK Trail



On way to Cone Peak  
8-47





So Tired Cone Pk '47



At Last!



Top of Wrong Peak

Some View! E-47



Chuck Sunny Skip Irma

On Cone Pk  
Catwalk.



Finally Made it!

Cone Pk. 8-'47





Mom - Pop - Sonny  
Repair Work Cone Pk 8-47

Charlie - Cone Pk '47



Wow! Some Load  
Cone PK 8-47



Happy Daze!  
Cone Pk 8-47



Beautiful Terrain  
Cone Pk 8-47

Rugged Terrain





Chuck's Chippie on Catwalk



Skip feeding Chipmunk  
Cone Pk. 8-47



Chipmunk on Catwalk



Guess Who ???



Chuck's "Chippie"





Repairmen  
Sonny - Poppy  
Cone PK - '47



Cone PK Fog Scene ' 47



Heading Back! Cone PK - 47



Scenes from Cone PK. 8- '47



Cone PK. Scene 8-'47





Aug 3-1946

Aug 3, 1946



On trail to 3 Pks. 8-'46



Trail To 3 Pks. 8-'46

Fishermen  
On way to  
Three Peaks  
Aug - 1946



Arrival at Three Peaks 8-'46  
7 hr. climb - 3 1/2 hrs return.



On the trail to 3 Pks 8-46





Arrival  
at  
Three Peaks  
8-'46  
10 mile  
climb from  
Salmon Creek.



Ted Skip Chuck Bob



Getting Ready To leave for Home 8-'46



3 Pks.  
Catwalk.  
8-'46



Picture  
Taking  
Time  
3 Pks.  
8-'46





3 PKs. Lookout 8-'46



View from 3 PKs. 8-'46



Skippy Tip-top 8-'46



Guest Quarters 8-'46



3 PKs. Lookout 8-'46





Views from Three Peaks.

8-'46



Please shut the door!



Charlie Herbert      Jess Snow  
Big Sur - 1942



Another Chipmunk  
of Chuck's.

8-'46





Trail to Pinyon Pk. 8-3-

Trail to Pinyon Pk. Lookout  
Aug. 3. 1951



From Pinyon Glacier 2-51

Ted - Pinyon Pk. Lookout.



42 Steps to tower Pinyon 8-51

Long way up to tower  
42 steps. 8-51



Scene taken from Pinyon Tower.  
Guest Cabin in foreground. 8-51

Irma & her horse  
Pinyon Pk. 1951



Ted & his horse  
Pinyon Pk 1951





Pinyon Terrain  
Rock Terrain @ Pinyon Pk.

"The Thinker"



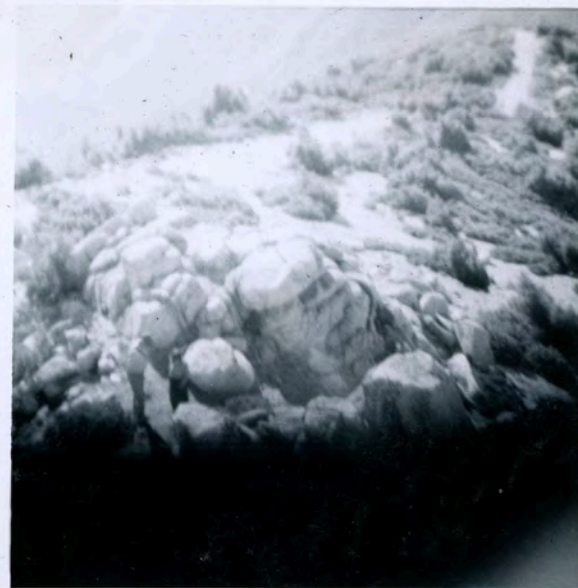
Oh No! Not again!



Sea of fog from Pinyon Pk.  
8-51



Getting Ready to leave  
Pinyon Pk. 8-51



Pinyon Rock Garden 8-51  
Pinyon Rock Garden  
8-51









Pin yon



Pin yon

Pin yon



Pin yon



Pin yon





Cone Cone PK.



H-3



Pinyon

Pinyon 4/3





Pinyon



Aug 1911

Orin



Pinyon



Pinyon













Minor Flash - from A.S. Road To Piney L.O.







#② 1 3:46 p.m. 7-27-51



#② 5:15 p.m. Somewhere around 4:30 p.m.



#② 3 5:45 p.m. 5:45 about





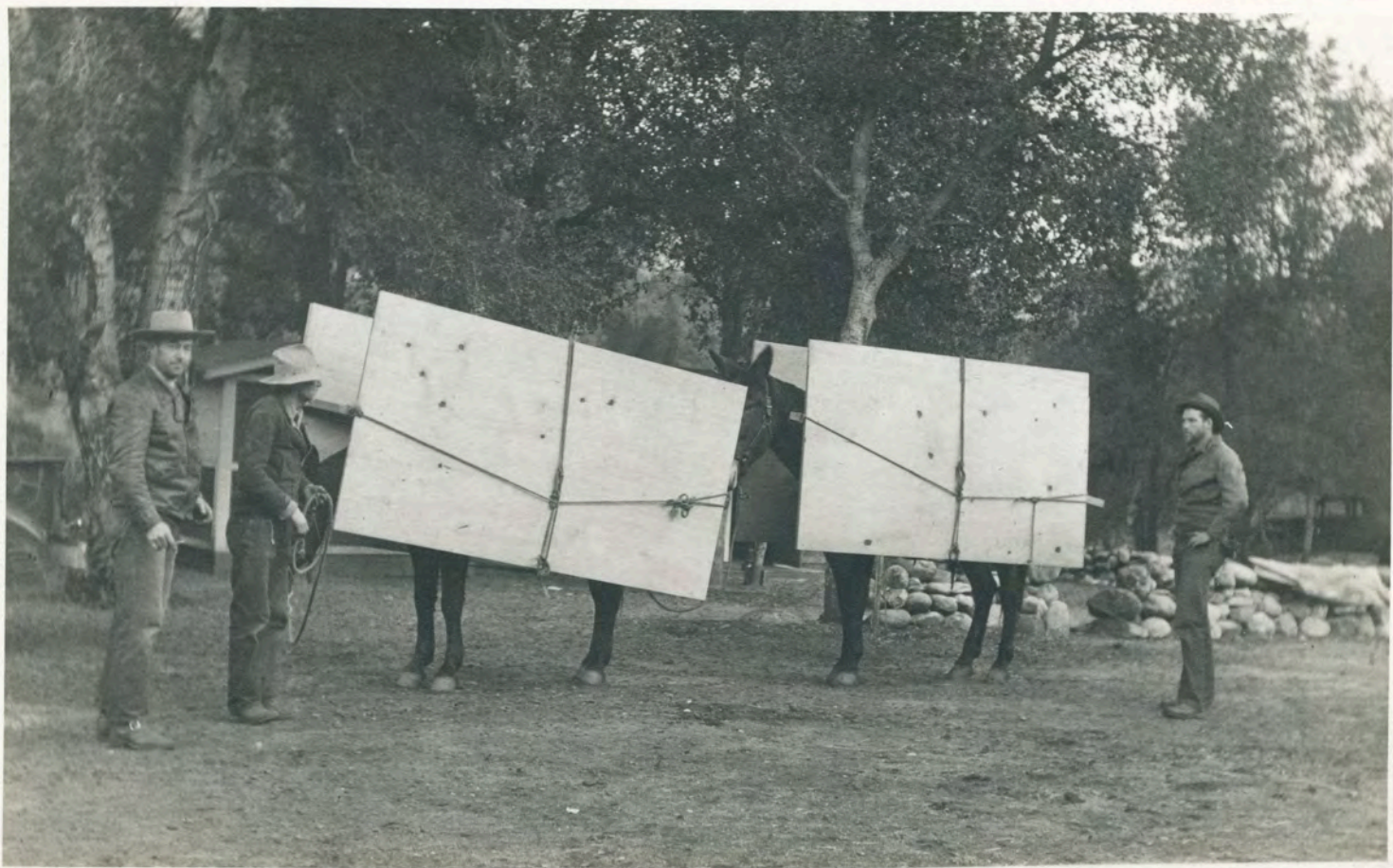


Packing in to Carmel Mt.

Palo Colorado 1942.

Ted - Ruth - Kate - .5







Ted- Sherman Mamfield and  
Packing into Ventana from Barnes Camp  
Cashana - Carmel Valley  
1942.





1942







Lloyd Sweetman family.  
Big Sur - 1942.







Big Sur - 1942.

Ross  
Bob Aldridge  
Peggy Ross

Ross

Lloyd Olsen

Nana Olsen

Tom (Skip) Pearson

Irma (Mama) Pearson

Earl (Dad) Pearson (Dad)

Mrs. Ross

Mr. Ross

(Photographer  
from L.A.)













State Division  
of Forestry.

Felton  
1948  
Office Force

Ryelander  
Oren Davis  
Mrs. Loomis  
Heville Gumm  
Les Gumm  
Jim Jolley



Garage & Machine Shop  
State Forestry Felton  
1948



↑ AID DAY

Oren Davis Mrs. Gordon Pantap  
Crew.

Felton - Calif.

Bob Poole Ted Reaves Oren Davis



Felton  
Calif

Harry Peters Les Gumm Del Cuntis







Buildings at Felton



Refrigeration & Storehouse Felton



Garage & Truck  
Corralitos.



Bob Poole  
Working on  
Steps.



Corralitos Fish Pond.

1948



Corralitos Garage - Truck 1948





Cornalitos Fire Truck. 1948



June - 48 Cornalitos  
Cornalitos Station June 1948



Cornalitos Forestry Crew.



Doris planting garden.



Cornalitos Station.



6-48  
Cornalitos Fish Pond





Fire Fighters - Corralitos



Forestry Crew - Corralitos



Crewman



Fire fighting Crew - Corralitos



Davis





Corralitos Fire Trucks 49

Washburn Gum Reese Ford



1949



Les Gum @ Fire Demonstration  
Corralitos



Aug 9 - 1948

Ted & Truck  
Corralitos.  
1948



Corralitos  
Fire Demonstration





Highland - Fire Demonstration



'1949



Fine  
Demonstration  
Bob Ford  
Highland



Bob Ford      Fire Demonstration  
1949



Highland  
School

C. H. Henderson

Oct 4, 1949





Mrs. Gordon  
Mc Dermitt  
Dick Whiteside  
Gunsen in law  
Davis  
Dud Hill



Cornalitos Crew  
'50



Cornalitos Buildings



Fire Demonstration  
S.C. County Fair Ground

Fire  
Demonstration



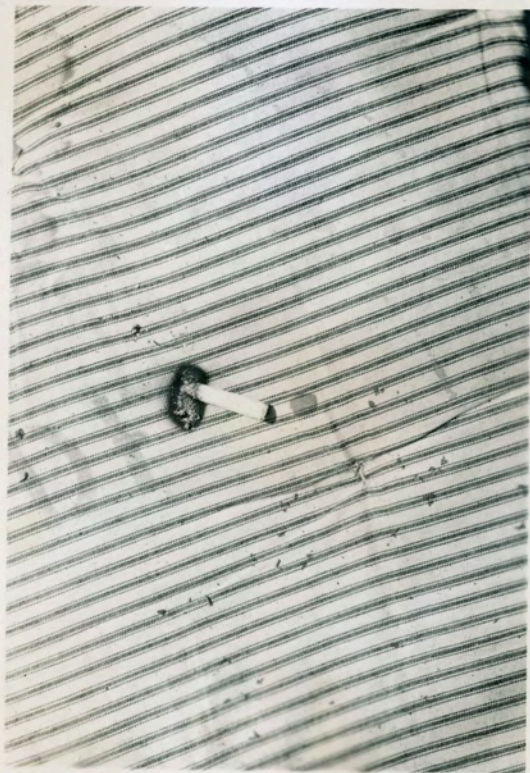




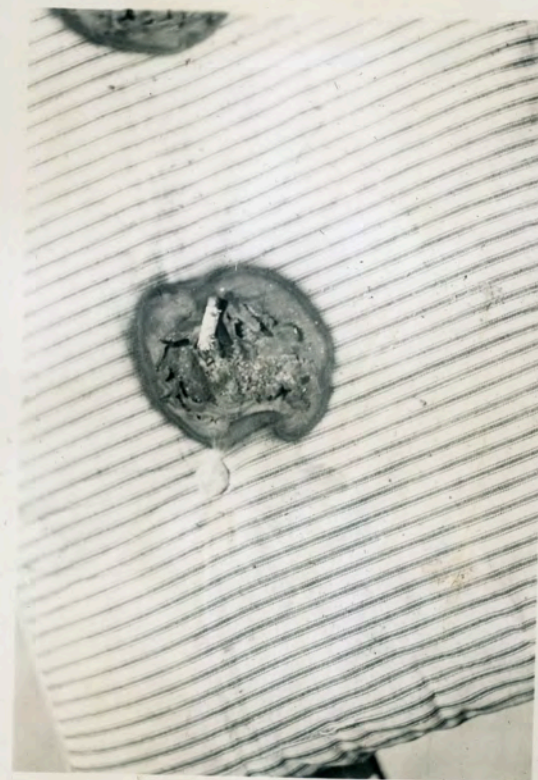
Fair Ground  
Fire  
Demonstration



S.C. County Fair Grounds '49



Demonstration



Demonstration





San Luis Obispo



Bldg. Const. Supervisor - Glen Rock



S.L.O.



Buildings in Progress 1950



SLO Garages 1950

SLO  
1950



San Luis Obispo  
1950



S.L.O. 1950



S.L.O.



New Asst. Ranger  
S.L.O.



Glen Rock - Charlie?





Mrs. G.

Ford Reaves Reese

1950



Ford McDaniel  
Mrs. G. Finch  
Ted Reese

1950



Bob Hildridge Cornalitos

1950





Preparing for Fine Season 1950



Folding Fine Camp Tables 1950  
made by E.T. Reeves



Harry McDermott  
Bob Ford  
Bud Finch  
Jim Ryan  
Ted



Corralitos Station

1950





Old original  
Hearst Ranch House



Complex  
or original



Wild animals



Hearst's Castle from  
far distance



74 steps of  
Hearst's Castle.



More of complex



Hearst's Castle from  
distance

Summer of 1950



Llama



EIK







Hearst's Castle  
in distance

Scenes of Hearst's Castle  
and area during Forest  
fire on Hearst Ranch.

Summer of 1950

From Distance



Hearst's Castle  
San Simeon



Hearst's Castle  
San Simeon



True Camel.



View from Castle.



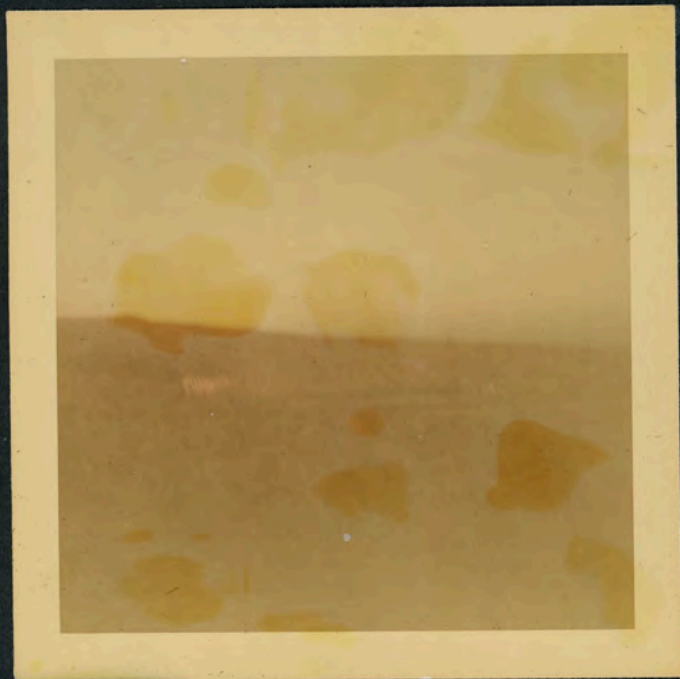
Summer of 1950.



Hearst's Castle  
Citrus grove in foreground



Wild animals on Hearst Ranch

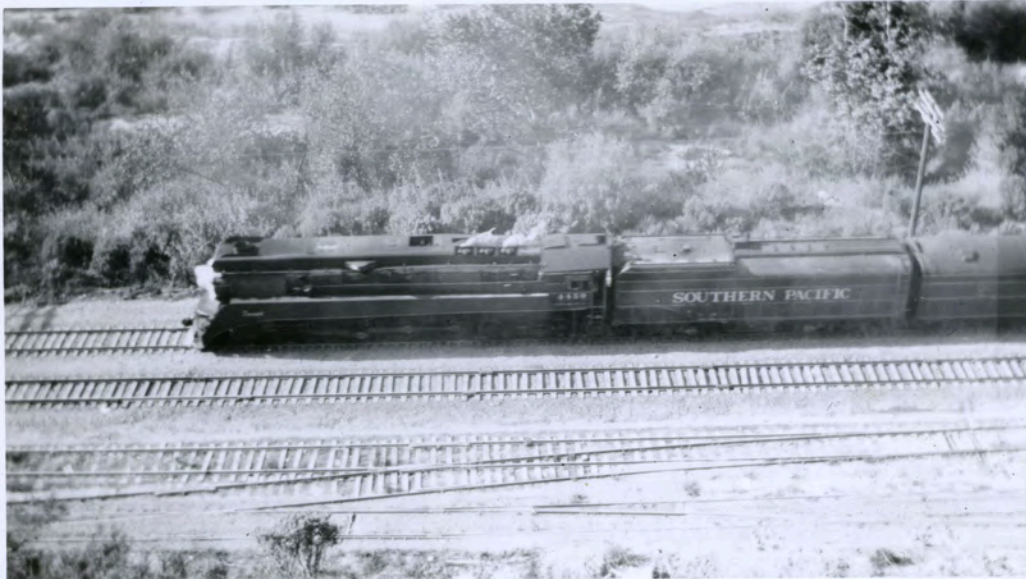


Smoke from forest fire



More wild animals.





Southern Pacific



Granite Rock

'47



Dump Cars



Frank Swearingen Supt. of Quarry



Train passing below Rock Quarry Nov 28 1947



Ted @ Quarry 1947





Ted's Office Portale Dr Santa Cruz

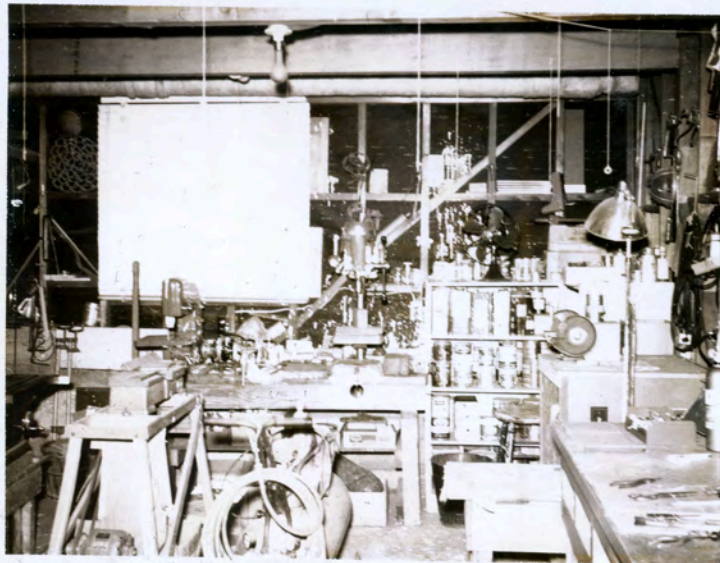


Kathy and Chris  
CPH LITHO IN U.S.A. 84-2293  
Office Force

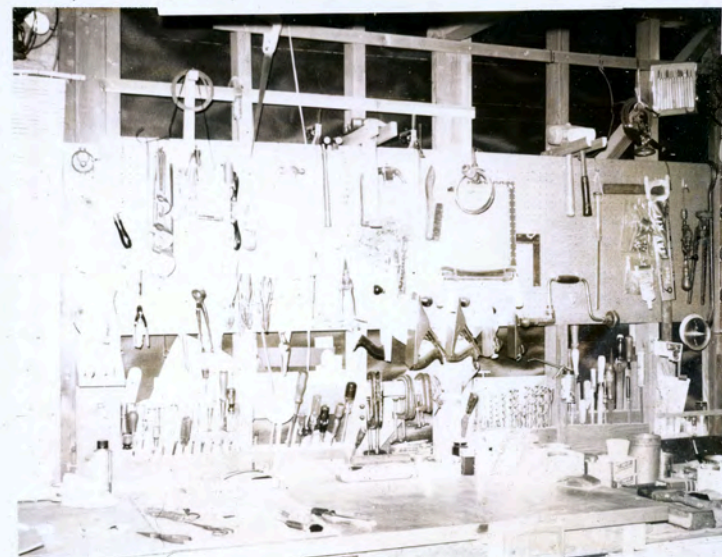


Ted - RE office

July 17 '65



Margie  
Office Girl









Ledi Real Estate  
photo. - 1960 ?





Charlie & Alex Campbell







# Felton Camp Trains 50 State Fire Fighter Foremen From Five

## Increase In Efficiency Is Objective

By Frank N. Jones

Fighting fires in the redwood forests of California is a mighty complicated task and getting more so each year as the state division of forestry adopts and develops more scientific methods of combating fires.

Gone forever are the days when little was done about a fire until it threatened to "burn up a county." For more than 25 years the state division of forestry has been striving to increase fire fighting efficiency.

This phase, along with stressing the importance of fire prevention to the public, is a large part of the work of all forestry employes from Chief Forester De Witt Nelson at Sacramento to foremen at the scores of fire fighting installations in the various counties throughout the state.

In Santa Cruz county since last January there have been more than 80 rural fires, largest of which was the 60-acre Pine mountain blaze over July 4 which forced evacuation of Big Basin park.

To increase fire fighting efficiency in fires of this magnitude, district 5, of the state division of forestry held a two-day fire camp last week on Graham Hill road near Felton. Head official was C. G. Strickland of the Monterey district headquarters, deputy state forester.

"Fire boss" at the camp was Lew Reese, associate ranger at Felton under Chief Ranger Les Gum. "Camp boss" was Ted Reeves, foreman of the Corralitos station. Other officials included Carl Albertus, assistant to Strickland who will be remembered for his work at the 18,000-acre Bonny Doon fire of 1948, and Leonard Chatten, Sacramento, an observer for Chief Nelson.

Thursday and Friday 50 men, most of them of the grade of foreman or above, took part in a training program under conditions simulating a large fire which would necessitate action by 250 fire fighters. It was on a 24-hour basis.

The underlying purpose of the program, first of its type ever held in Santa Cruz county was to "train specific men for a specific job."

Ranger Gum explained that in the past local officials who are familiar with terrain have had to leave fire line fighting to men from other counties while they stayed back taking care of other operations.

The training gained at the Graham Hill camp should enable officials to exchange all jobs. At future fires throughout the district local men may get out on the fire lines leaving such operations as communications, supply, transportation, maps and plans, and other organization to officials from out of the county.

Forestry district 5 includes Santa Cruz, Santa Clara, San Benito, Monterey and San Luis Obispo counties. San Mateo is not included as it is one of few counties in the state with a county fire warden.

Strickland said the lessons learned here will be taken back to other counties in the district with Ranger Reese acting as coordinator. Reese has been working on the plans, utilizing the state fire manual, for nearly two years.

Both Strickland and Albertus had a good word to say for the 60 boys at Camp Ben Lomond, only California Youth Authority camp in the district. Strickland commented, "I feel a special commendation is due CYA boys for their good work on the fire lines in our district."

When asked to sum up the activities and purpose of the Felton fire camp Strickland said it was to prepare forestry officials for "conflagration potential" a thought ever present in the mind of a state division of forestry worker.

"Anything can happen, it has happened, and will happen again," he concluded.

## 'The Brass' Looks Over Plans



There is much more to fighting a fire than squirting a hose at a burning tree and these top officials at the Felton fire camp

Thursday and Friday did the planning. They are (left) Carl Albertus, assistant deputy state forester of Monterey; Lew Reese,

Felton, associate ranger who was "camp boss;" and C. G. Strickland, Monterey, deputy state forester in charge of five counties.

## Veteran Cook Provides Chow At Fire Camp



Feeding 50 husky men at a fire camp is nothing new for Chef Charles W. "Doc" Shumway. Ever since 1913 he has been working for various camps and has cooked for both the federal and state forestry service. Here he is whacking off a slice of sirloin roast for Bud Lynch (left), Corralitos, acting transportation officer, and Richard Whiteside, Sandy Point station driver. Along with other things, the men ate 72 pounds of meat and 150 pounds of potatoes in two days. (Another picture on page 1.)

## Fire Crew Leaders Study Under Pines



Poison oak and wood ticks hold no terror for these "students." They are all district 5 state division of forestry workers who are listening to Instructor John Otter, division forestry engineer. In this outdoor classroom under the Ponderosa pines on Graham Hill road, Otter explains a layout of fire conditions with his portable blackboard.

Santa Cruz Sentinel-News  
Sunday, August 6, 1950